



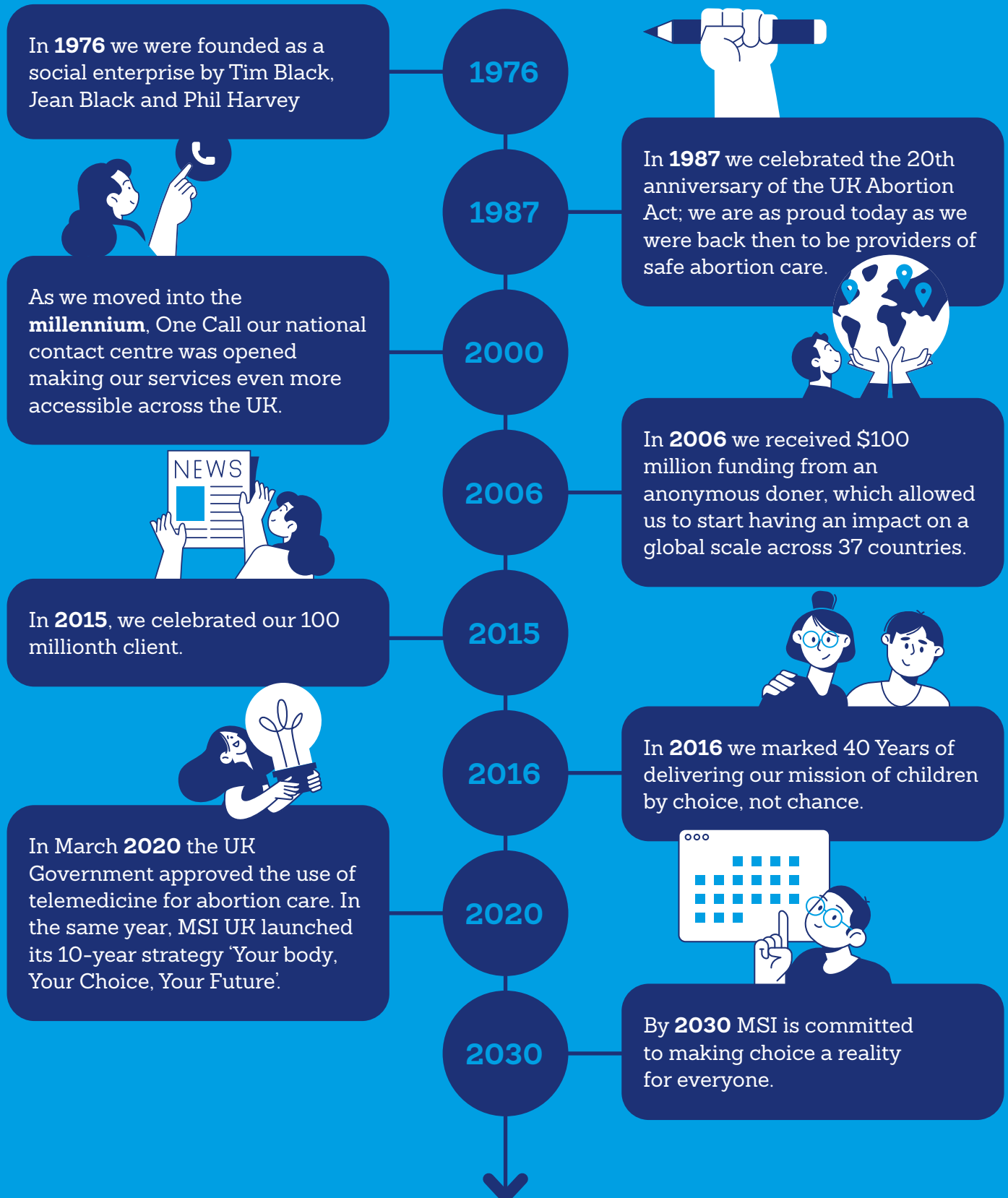
**Choices
make
dreams
possible**

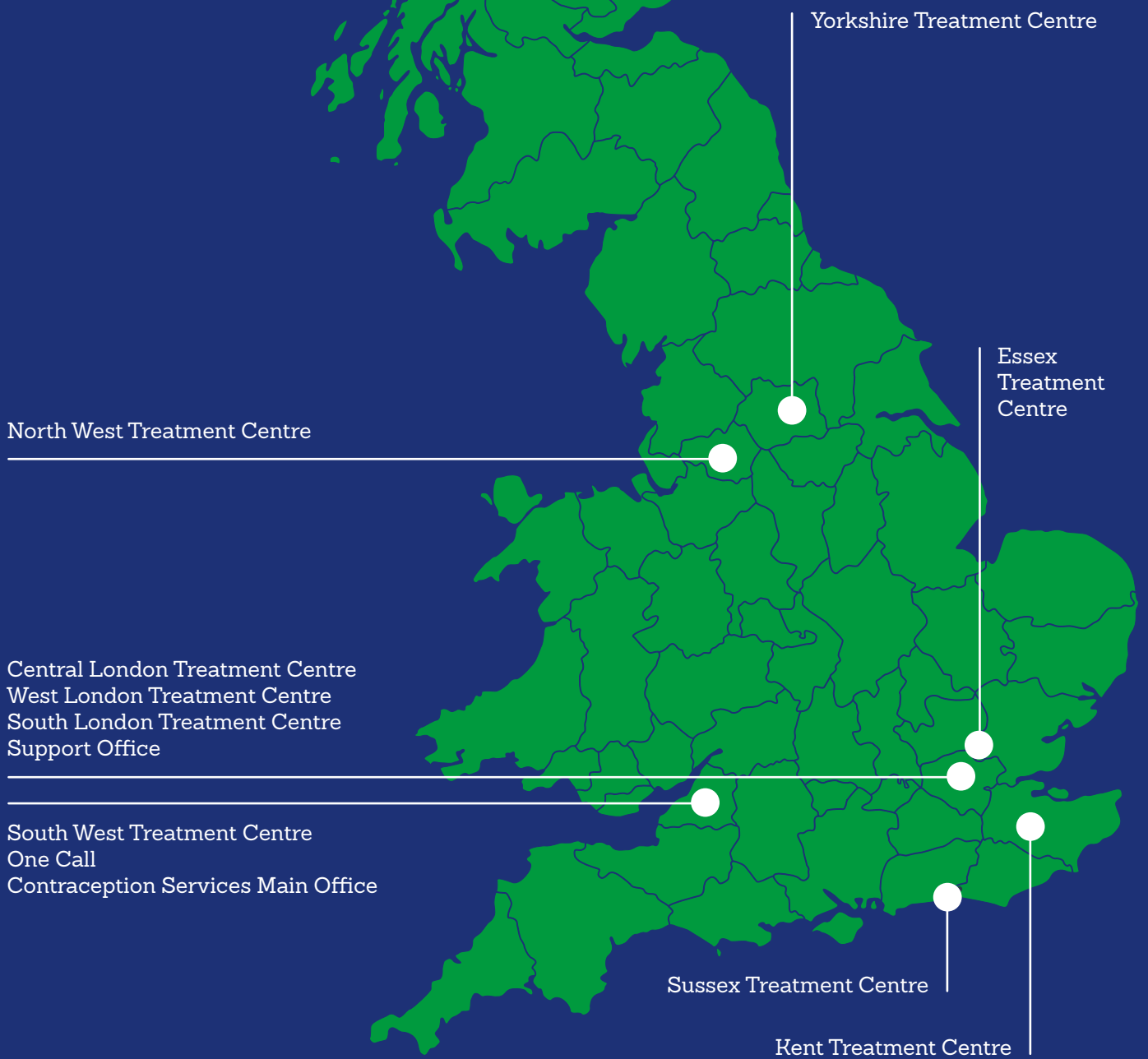
Fabulous news, you have an interview!

Here at MSI Reproductive Choices UK (MSI UK) we empower our clients to make the choices that are right for them, we are excited that you have chosen to apply to join our team and we can't wait to meet you.



We've come a long way:





Our Team



Only when choice is a reality for each of us, can we create a better, more equal world for everyone.

At MSI UK we employ over 500 clinical and non-clinical team members who are committed to making sure that every person that accesses our services receives the best possible care.

We believe diversity is a strength and our team members come from a wide range of sectors. They are all passionate, focused, intelligent, high achieving and talented individuals. What unites us all is our absolute dedication to deliver our mission.

We're proud to be champions for reproductive choice, here at MSI UK we celebrate every one of our colleagues that work towards creating a safe and non-judgmental service for our clients.

As a social enterprise that is changing the world for the better, we reinvest and donate our profits towards creating a positive social change globally. By joining MSI UK you too can help change the world.

Our Values

Here at MSI UK our core values ensure every colleague can thrive, feel valued and contribute meaningfully to our mission.

Mission driven: With unwavering commitment, we exist to empower women and men to have children by choice not chance.

Client centred: We are dedicated to our clients and work tirelessly to deliver high-quality, high-impact services that meet their individual needs.

Accountable: We are accountable for our actions and focus on results, ensuring long term sustainability and increasing the impact of the Partnership.

Courageous: We recruit and nurture talented, passionate and brave people who have the courage to push boundaries, make tough decisions and challenge others in line with our mission.

Resilient: In challenging situations, we work together and support each other, adapting and learning to find solutions, whatever we're up against.

Inclusive: We believe that diversity is a strength. We all play our part in creating a culture where every team member can thrive, feel valued and contribute meaningfully to our mission, and where all our clients feel welcome and supported.



Your interview

You've been successful for an interview, don't be apprehensive!

During our time together we will talk through the role that you have applied for, along with your experience and any relevant qualifications.

Our values are at the heart of what we do, and we will explore these during our discussion, we'll also ask questions so we can understand more about how you work and what you will bring to our team.

Your interview is an opportunity for us to get to know each other, so please come prepared to ask as many questions as you wish, to ensure we are the best fit for you.

As part of our pre-employment checks, at your interview we will need to verify your identity and right to work. To assist us with this please bring three forms of identification to your interview as detailed in the attached documentation.

MSI UK is dedicated to equal opportunities for all and recognises that every individual is unique. Whilst we always seek to embrace individual differences and celebrate the diversity of our workforce, we also want to ensure that every team member is suited to their role and that they are given the best opportunity to succeed.



Your future

MSI UK Employee Value Proposition

Financial

- Achievable opportunities for salary progression
- Market leading Aviva pension provider up to 5% employer contribution
- Over 4,000 perks and discounts from worldwide retailers to local businesses through Blue Light and Perkbox
- Up to £1000 salary sacrifice to purchase a bike tax free including safety equipment
- Up to £7000 annual season ticket loan for use on public transport
- Relevant equipment provided to fulfil your role
- Company sick pay
- Competitive overtime rates
- Death in service benefit

Wellbeing

- Competitive family friendly benefits to support you balance your family and working life
- Potential for flexible working
- 25 days annual leave, plus bank holidays increasing with continuous service
- We celebrate our colleagues through our national Employee Recognition Programme
- Employee Assistance Programme / Occupational Health Support - providing advice and counselling on a variety of matters
- Accredited Mental Health First Aiders to support employees in moments of need
- Annual contribution towards eye test and glasses

Personal Development

- Great opportunities to progress
- Paid training provided to ensure you are fully equipped to perform within your role and beyond
- Develop your skills through an accredited apprenticeship programme
- Training and Development learning agreements available

The above is subject to role and contract type.

For all recruitment queries call the MSI UK recruitment team on 01454 457 422.

We know that dreams are powered by our ability to make choices.

Your Body, Your Choice, Your Future, Your Career.

MSI Reproductive Choices
1 Conway Street
Fitzroy Square
London
W1T 6LP
UK

Tel: 0345 300 8090
Email: services@MSIChoices.org.uk

www.MSIchoices.org.uk/
www.facebook.com/MSIchoicesUK
twitter.com/MSIChoices
www.linkedin.com/company/msi-reproductive-choices-uk

Registered charity No: 265543.
Registered company No: 1102208